

# Rod Ends



## FMW3E\_4 / NSA8143



- Male Thread
- Self-Lubricating
- CRES

### Specifications

Diameter Code	d		D		B		C		d <sub>i</sub> (min.)		G
	-0.0127	-0.0005	±0.254	±0.0100	-0.127	-0.0050	±0.127	±0.0050	mm	Inch	UNJF-3A
	mm	Inch	mm	Inch	mm	Inch	mm	Inch	mm	Inch	
03	4.826	0.1900	20.472	0.8060	11.100	0.4370	8.560	0.3370	7.620	0.3000	.3125-24
04	6.350	0.2500	20.472	0.8060	11.100	0.4370	8.560	0.3370	7.620	0.3000	.3125-24
05	7.937	0.3125	22.860	0.9000	11.100	0.4370	8.306	0.3270	9.140	0.3598	.3125-24
06	9.525	0.3750	26.035	1.0250	12.700	0.5000	10.566	0.4160	11.940	0.4701	.3750-24
07	11.112	0.4375	29.210	1.1500	14.275	0.5620	11.481	0.4520	13.720	0.5402	.4375-20
08	12.700	0.5000	33.960	1.3370	15.875	0.6250	13.081	0.5150	15.490	0.6098	.5000-20
10	15.875	0.6250	38.735	1.5250	19.050	0.7500	14.656	0.5770	19.050	0.7500	.6250-18
12	19.050	0.7500	45.085	1.7750	22.225	0.8750	16.256	0.6400	21.590	0.8500	.7500-16
14	22.225	0.8750	51.435	2.0250	22.225	0.8750	19.431	0.7650	25.400	1.0000	.8750-14
16	25.400	1.0000	70.485	2.7750	34.925	1.3750	25.781	1.0150	32.260	1.2701	1.2500-12

### Designation

**NSA8143**  
Number of Series

**04**  
Diameter Code

**X**  
Starting Torque  
X: Reduced  
None: Normal

**R**  
Thread  
R: Right Hand  
L: Left Hand

**F**  
Longitudinal Groove  
F: Without Groove  
K: With Groove

**P**  
Surface Treatment  
No Code: None  
P: Rod End Cadmium Plated

Part Number Example  
**NSA8143 -04 X R F P**

**FMW3E**  
Number of Series

**4.4**  
Diameter Code

**X**  
Starting Torque  
X: Reduced  
None: Normal

**R**  
Thread  
R: Right Hand  
L: Left Hand

**K**  
Longitudinal Groove  
F: Without Groove  
K: With Groove

Part Number Example  
**FMW3E 4.4 X R K**

**Bearing Materials:**

**Rod End**  
EN2539 / 17-4PH H1025 / 1.4548.4

**Outer Ring**  
EN2539 / 17-4PH H1150 / 1.4548.4

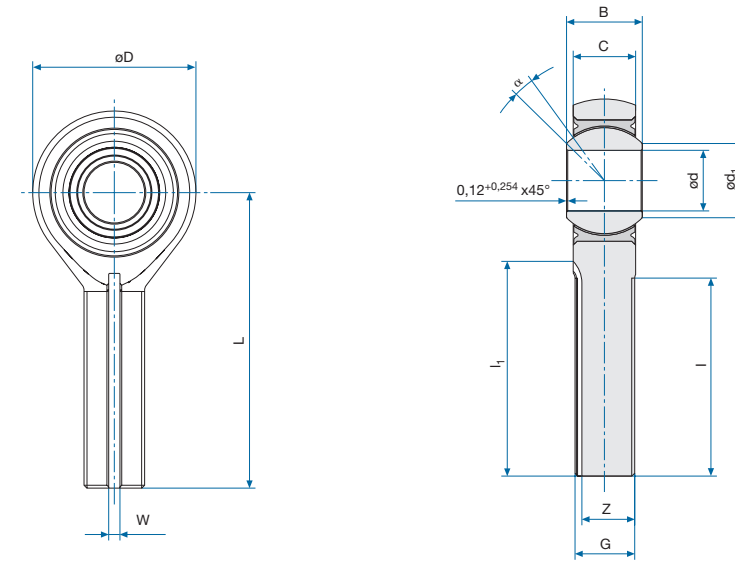
**Inner Ring**  
EN2030 / AISI 440C / 1.3544.9

**Liner**  
per SAE AS81820 / EN2755

**Technical Specification**  
SAE AS81935

\* Inch dimensions are for reference only. | \* Permanently marked in non-functional area.

### Schematic Drawing



### Specifications

Diameter Code	L		I		W		Z		I <sub>1</sub>		α
	±0.254	±0.0100	+1.520 -0.760	+0.060 -0.030	+0.127	+0.0050	-0.127	-0.0050	+1.520 -0.760	+0.060 -0.030	
	mm	Inch	mm	Inch	mm	Inch	mm	Inch	mm	Inch	
03	39.675	1.5620	25.400	1.5620	1.570	0.0618	6.600	0.2598	28.500	1.1220	15°
04	39.675	1.5620	25.400	1.5620	1.570	0.0618	6.600	0.2598	28.500	1.1220	15°
05	47.625	1.8750	26.975	1.8750	1.570	0.0618	6.600	0.2598	30.800	1.2126	14°
06	49.225	1.9380	31.750	1.9380	2.360	0.0929	7.900	0.3110	34.300	1.3504	8°
07	53.975	2.1250	34.925	2.1250	2.360	0.0929	9.400	0.3701	39.300	1.5472	10°
08	61.925	2.4380	38.100	2.4380	2.360	0.0929	11.070	0.4358	42.400	1.6693	9°
10	66.675	2.6250	41.275	2.6250	3.175	0.1250	13.740	0.5409	46.000	1.8110	12°
12	73.025	2.8750	44.450	2.8750	3.175	0.1250	16.840	0.6630	49.350	1.9429	13°
14	85.725	3.3750	47.625	3.3750	3.960	0.1559	19.740	0.7772	53.400	2.1024	6°
16	104.775	4.1250	53.975	4.1250	4.750	0.1870	28.850	1.1358	61.000	2.4016	12°

FMW3E\_4 / NSA8143

Diameter Code	Starting Torque				Static Limit Load		Weight	
	No Code		Code X		kN	lbs	g	lbs
	Nm	In.-lbs	Nm	In.-lbs				
03	0.056 to 0.678	0.4956 to 6.0008	0.030 to 0.060	0.2655 to 0.5310	10.5	2360	27	0.060
04	0.056 to 0.678	0.4956 to 6.0008	0.030 to 0.060	0.2655 to 0.5310	21.6	4860	31	0.068
05	0.113 to 1.130	1.0001 to 10.0014	0.030 to 0.060	0.2655 to 0.5310	31.9	7180	50	0.110
06	0.113 to 1.130	1.0001 to 10.0014	0.030 to 0.060	0.2655 to 0.5310	38.0	8549	63	0.139
07	0.113 to 1.130	1.0001 to 10.0014	0.060 to 0.120	0.5310 to 1.0619	53.4	12000	113	0.249
08	0.113 to 1.130	1.0001 to 10.0014	0.060 to 0.120	0.5310 to 1.0619	86.7	19499	128	0.282
10	0.113 to 1.130	1.0001 to 10.0014	0.060 to 0.120	0.5310 to 1.0619	97.4	21900	167	0.367
12	0.113 to 1.130	1.0001 to 10.0014	0.060 to 0.120	0.5310 to 1.0619	130.3	29298	263	0.579
14	0.226 to 1.808	2.0003 to 16.0022	0.110 to 0.220	0.9735 to 1.9469	153.5	34498	358	0.788
16	0.226 to 1.808	2.0003 to 16.0022	0.110 to 0.220	0.9735 to 1.9469	357.2	80296	1043	2.295

### Contact

**USA: KAMATICS CORPORATION** 1330 Blue Hills Avenue Bloomfield, CT 06002 USA | Tel: +1 860 243 9704 | E-mail: KSB@kaman.com  
**GERMANY: RWG GERMANY GmbH** Medbacher Weg 1 D-91315 Höchstadt a. d. Aisch | Tel: +49 (91 93) 50105 100 | E-mail: RWG-info@kaman.com

# Rod Ends



## FMW3F\_4 / NSA8149



- Female Thread
- Self-Lubricating
- CRES

### Specifications

Diameter Code	d		D		B		C		d <sub>i</sub> (min.)		L	
	-0.0127	-0.0005	+0.889 -0.254	+0.0350 -0.0100	-0.127	-0.0050	±0.127	±0.0050			±0.254	±0.0100
	mm	Inch	mm	Inch	mm	Inch	mm	Inch	mm	Inch	mm	Inch
03	4.826	0.1900	20.472	0.8060	11.100	0.4370	8.560	0.3370	7.645	0.3010	34.925	1.3750
04	6.350	0.2500	20.472	0.8060	11.100	0.4370	8.560	0.3370	7.645	0.3010	37.312	1.4690
05	7.937	0.3125	22.860	0.9000	11.100	0.4370	8.306	0.3270	10.185	0.4010	34.925	1.3750
06	9.525	0.3750	26.035	1.0250	12.700	0.5000	10.566	0.4160	11.963	0.4710	41.275	1.6250
07	11.112	0.4375	29.210	1.1500	14.275	0.5620	11.481	0.4520	13.767	0.5420	46.024	1.8120
08	12.700	0.5000	33.960	1.3370	15.875	0.6250	13.081	0.5150	15.545	0.6120	53.975	2.1250
10	15.875	0.6250	38.735	1.5250	19.050	0.7500	14.656	0.5770	19.100	0.7520	66.675	2.6250
12	19.050	0.7500	45.085	1.7750	22.225	0.8750	16.256	0.6400	22.675	0.8927	73.025	2.8750
14	22.225	0.8750	51.435	2.0250	22.225	0.8750	19.431	0.7650	26.987	1.0625	85.725	3.3750
16	25.400	1.0000	70.485	2.7750	34.925	1.3750	25.781	1.0150	32.385	1.2750	104.775	4.1250
20	31.750	1.2500	73.660	2.9000	38.100	1.5000	28.956	1.1400	37.075	1.4596	127.000	5.0000

### Designation

**NSA8143**  
Number of Series

**04**  
Diameter Code

**L**  
Thread  
R: Right Hand  
L: Left Hand

**Part Number Example**  
NSA8143 -04 L

**FMW3F**  
Number of Series

**5.4**  
Diameter Code

**L**  
Thread  
R: Right Hand  
L: Left Hand

**Part Number Example**  
FMW3F 5.4 L

**Bearing Materials:**

**Rod End**  
EN2539 / 17-4PH H1025 / 1.4548.4;  
Cadmium Plated

**Outer Ring**  
EN2539 / 17-4PH H1150 / 1.4548

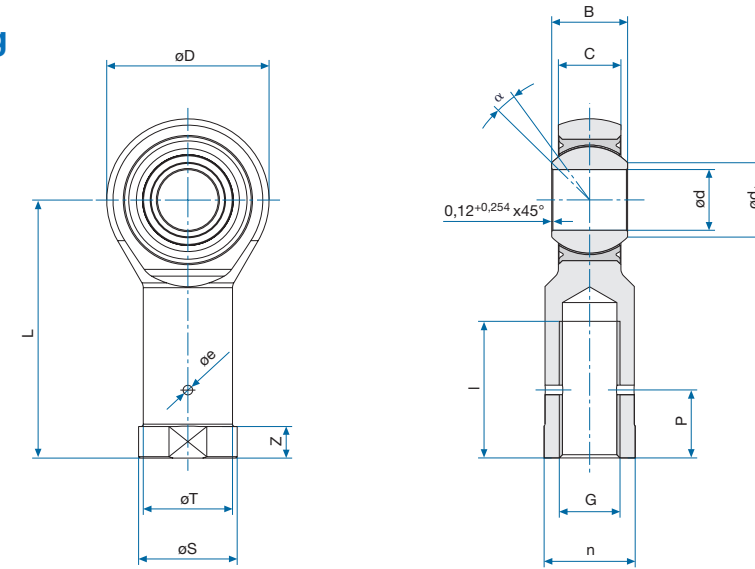
**Inner Ring**  
EN2030 / AISI 440C / 1.3544.9

**Liner**  
EN2030 / AISI 440C / 1.3544.9

**Technical Specification**  
per SAE AS81820 / EN2755

\* Inch dimensions are for reference only. | \* Permanently marked in non-functional area.

### Schematic Drawing



### Specifications

FMW3F\_4 / NSA8149

Diameter Code	l		n		S		P		T	
	+1.524 -0.762	+0.060 -0.030	±0.254	±0.0100	±0.254	±0.0100	±0.381	±0.0150	±0.381	±0.0150
	mm	Inch	mm	Inch	mm	Inch	mm	Inch	mm	Inch
03	19.050	0.7500	11.100	0.4370	12.700	0.5000	9.652	0.3800	10.719	0.4220
04	19.050	0.7500	11.100	0.4370	12.700	0.5000	9.652	0.3800	10.719	0.4220
05	19.050	0.7500	11.100	0.4370	12.700	0.5000	9.652	0.3800	10.719	0.4220
06	23.799	0.9370	14.783	0.5820	15.875	0.6250	11.176	0.4400	14.402	0.5670
07	26.975	1.0620	15.875	0.6250	17.449	0.6870	12.700	0.5000	15.494	0.6100
08	28.575	1.1250	19.050	0.7500	20.624	0.8120	14.224	0.5600	18.669	0.7350
10	38.100	1.5000	22.225	0.8750	25.400	1.0000	17.526	0.6900	21.844	0.8600
12	41.148	1.6200	25.400	1.0000	26.924	1.0600	20.828	0.8200	25.019	0.9850
14	47.625	1.8750	28.575	1.1250	30.150	1.1870	23.875	0.9400	28.194	1.1100
16	53.975	2.1250	31.750	1.2500	33.325	1.3120	27.178	1.0700	31.369	1.2350
20	79.975	3.1486	42.900	1.6890	44.450	1.7500	33.528	1.3200	42.494	1.6730

Diameter Code	e		Z		Weight		G UNF-3B	α
	±0.100	±0.0039	±0.254	±0.0100	g	lbs		
	mm	Inch	mm	Inch				
03	2.000	0.0787	6.350	0.2500	27	0.059	.3125-24	16°
04	2.000	0.0787	6.350	0.2500	27	0.059	.3125-24	16°
05	2.000	0.0787	6.350	0.2500	31	0.068	.3125-24	15°
06	2.000	0.0787	6.350	0.2500	49	0.108	.3750-24	9°
07	2.000	0.0787	6.350	0.2500	81	0.178	.4375-20	11°
08	2.000	0.0787	6.350	0.2500	127	0.279	.5000-20	9°
10	2.000	0.0787	6.350	0.2500	190	0.418	.6250-18	12°
12	2.000	0.0787	6.350	0.2500	231	0.508	.7500-16	13°
14	2.000	0.0787	6.350	0.2500	426	0.937	.8750-14	6°
16	2.000	0.0787	6.350	0.2500	612	1.346	1.0000-12	12°
20	2.000	0.0787	6.350	0.2500	1406	3.093	1.2500-12	13°

### Contact

**USA: KAMATICS CORPORATION** 1330 Blue Hills Avenue Bloomfield, CT 06002 USA | Tel: +1 860 243 9704 | E-mail: KSB@kaman.com  
**GERMANY: RWG GERMANY GmbH** Medbacher Weg 1 D-91315 Höchstadt a. d. Aisch | Tel: +49 (91 93) 50105 100 | E-mail: RWG-info@kaman.com

# Rod Ends



REM



- Male Thread
- Self-Lubricating
- Dimensions According to SAE AS81935 / 1

## Specifications

Type	d		D		B		C		d <sub>1</sub>		G
	-0.0127	-0.0005	±0.254	±0.0100	-0.051	-0.0020	±0.127	±0.0050	(min.)		
	mm	Inch	mm	Inch	mm	Inch	mm	Inch	mm	Inch	UNJF-3A
REM6W10M	4.826	0.1900	20.472	0.8060	11.100	0.4370	8.559	0.3370	7.660	0.3016	.3125-24
REM8W10M	6.350	0.2500	20.472	0.8060	11.100	0.4370	8.559	0.3370	7.660	0.3016	.3125-24
REM10W10M	7.938	0.3125	22.860	0.9000	11.100	0.4370	8.305	0.3270	9.100	0.3583	.3125-24
REM12W10M	9.525	0.3750	26.035	1.0250	12.700	0.5000	10.566	0.4160	11.967	0.4711	.3750-24
REM14W10M	11.112	0.4375	29.210	1.1500	14.275	0.5620	11.480	0.4520	13.774	0.5423	.4375-20
REM16W10M	12.700	0.5000	33.959	1.3370	15.875	0.6250	13.081	0.5150	15.554	0.6124	.5000-20
REM20W10M	15.875	0.6250	38.735	1.5250	19.050	0.7500	14.655	0.5770	19.098	0.7519	.6250-18
REM24W10M	19.050	0.7500	45.085	1.7750	22.225	0.8750	16.256	0.6400	21.600	0.8504	.7500-16
REM28W10M	22.225	0.8750	51.435	2.0250	22.225	0.8750	19.431	0.7650	25.400	1.0000	.8750-14
REM32W10M	25.400	1.0000	70.485	2.7750	34.925	1.3750	25.781	1.0150	32.378	1.2747	1.2500-12

## Designation

**REM**

Number of Series

**S**

Longitudinal Groove

No Code: Without Groove

S: With Groove

Part Number Example

REM S L 8W10M X

**L**

Thread

No Code: Right Hand

L: Left Hand

**8 W 10 M**

Diameter Code

**X**

Starting Torque

No Code: Normal

X: Reduced

### Bearing Materials:

#### Rod End

MIL-S-5000; Cadmium Plated

#### Outer Ring

EN2539 / 1.4548 / 17-4 PH H1150

#### Inner Ring

EN2030 / 1.3544.9 / AISI 440C

#### Liner

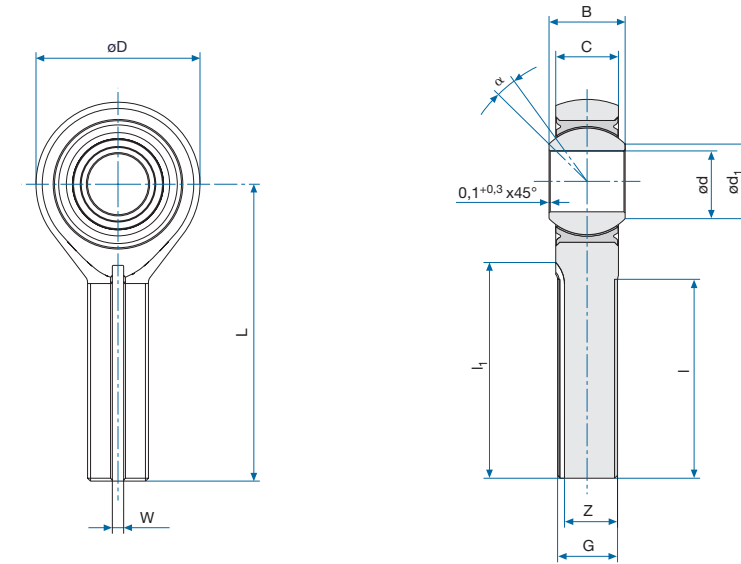
per SAE AS81820 / EN2755

#### Technical Specification

SAE AS81935

\* Inch dimensions are for reference only. | \* Permanently marked in non-functional area.

## Schematic Drawing



## Specifications

Type	L		I		I <sub>1</sub>		W		Z		α (min.)
	±0.254	±0.0100	±0.787	±0.0310	-0.508	-0.0200	+0.127	+0.0050	-0.127	-0.0050	
	mm	Inch	mm	Inch	mm	Inch	mm	Inch	mm	Inch	
REM6W10M	39.675	1.5620	24.587	0.9680	24.892	0.9800	1.575	0.0620	6.807	0.2680	15°
REM8W10M	39.675	1.5620	24.587	0.9680	24.892	0.9800	1.575	0.0620	6.807	0.2680	15°
REM10W10M	47.625	1.8750	30.149	1.1870	32.258	1.2700	1.575	0.0620	6.807	0.2680	14°
REM12W10M	49.225	1.9380	30.149	1.1870	31.369	1.2350	2.362	0.0930	8.103	0.3190	8°
REM14W10M	53.975	2.1250	32.537	1.2810	35.610	1.4020	2.362	0.0930	9.728	0.3830	10°
REM16W10M	61.925	2.4380	37.287	1.4680	40.360	1.5890	2.362	0.0930	11.303	0.4450	9°
REM20W10M	66.675	2.6250	39.675	1.5620	42.748	1.6830	3.175	0.1250	13.741	0.5410	12°
REM24W10M	73.025	2.8750	42.849	1.6870	45.923	1.8080	3.175	0.1250	16.840	0.6630	13°
REM28W10M	85.725	3.3750	50.800	2.0000	53.873	2.1210	3.962	0.1560	19.736	0.7770	6°
REM32W10M	104.775	4.1250	59.512	2.3430	62.585	2.4640	4.750	0.1870	28.854	1.1360	12°

Type	Starting Torque				Radial Static Ultimate Load		Fatigue Load		Weight	
	Normal		Code X		kN	lbs	kN	lbs	g	lbs
	Nm	In.-lbs	Nm	In.-lbs						
REM6W10M	0.056 to 0.678	0.5000 to 6.0000	0.028 to 0.056	0.2500 to 0.5000	10.5	2360	6.5	1470	33	0.072
REM8W10M	0.056 to 0.678	0.5000 to 6.0000	0.028 to 0.056	0.2500 to 0.5000	21.6	4860	10.6	2380	33	0.072
REM10W10M	0.113 to 1.695	1.0000 to 15.0000	0.028 to 0.056	0.2500 to 0.5000	31.9	7180	12.3	2770	39	0.087
REM12W10M	0.113 to 1.695	1.0000 to 15.0000	0.028 to 0.056	0.2500 to 0.5000	38.0	8550	15.9	3570	62	0.136
REM14W10M	0.113 to 1.695	1.0000 to 15.0000	0.056 to 0.113	0.5000 to 1.0000	53.4	12000	21.4	4800	83	0.183
REM16W10M	0.113 to 1.695	1.0000 to 15.0000	0.056 to 0.113	0.5000 to 1.0000	86.7	19500	34.2	7680	126	0.278
REM20W10M	0.113 to 1.695	1.0000 to 15.0000	0.056 to 0.113	0.5000 to 1.0000	97.4	21900	40.8	9180	192	0.424
REM24W10M	0.113 to 1.695	1.0000 to 15.0000	0.056 to 0.113	0.5000 to 1.0000	130.3	29300	51.6	11600	290	0.639
REM28W10M	0.113 to 2.712	1.0000 to 24.0000	0.113 to 0.226	1.0000 to 2.0000	153.5	34500	58.3	13100	437	0.963
REM32W10M	0.113 to 2.712	1.0000 to 24.0000	0.113 to 0.226	1.0000 to 2.0000	357.2	80300	135.2	30400	1155	2.546

## Contact

USA: KAMATICS CORPORATION 1330 Blue Hills Avenue Bloomfield, CT 06002 USA | Tel: +1 860 243 9704 | E-mail: KSB@kaman.com

GERMANY: RWG GERMANY GmbH Medbacher Weg 1 D-91315 Höchstadt a. d. Aisch | Tel: +49 (91 93) 50105 100 | E-mail: RWG-info@kaman.com

# Rod Ends



REF



- Female Thread
- Self-Lubricating
- Dimensions According to SAE AS81935 / 2

## Specifications

Type	d		D		B		C		d <sub>1</sub> (min.)	
	-0.013	-0.0005	±0.254	±0.0100	-0.051	-0.0020	±0.127	±0.0050	mm	Inch
	mm	Inch	mm	Inch	mm	Inch	mm	Inch	mm	Inch
REF 6W10M	4.826	0.1900	20.472	0.8060	11.100	0.4370	8.559	0.3370	7.620	0.3000
REF 8W10M	6.350	0.2500	20.472	0.8060	11.100	0.4370	8.559	0.3370	7.620	0.3000
REF 10W12M	7.937	0.3125	22.860	0.9000	11.100	0.4370	8.305	0.3270	9.144	0.3600
REF 12W12M	9.525	0.3750	26.035	1.0250	12.700	0.5000	10.566	0.4160	11.938	0.4700
REF 14W14M	11.112	0.4375	29.210	1.1500	14.274	0.5620	11.480	0.4520	13.716	0.5400
REF 16W16M	12.700	0.5000	33.959	1.3370	15.875	0.6250	13.081	0.5150	15.494	0.6100
REF 20W20M	15.875	0.6250	38.735	1.5250	19.050	0.7500	14.655	0.5770	19.050	0.7500
REF 24W24M	19.050	0.7500	45.085	1.7750	22.225	0.8750	16.256	0.6400	21.590	0.8500
REF 28W28M	22.225	0.8750	51.435	2.0250	22.225	0.8750	19.431	0.7650	25.400	1.0000
REF 32W40M	25.400	1.0000	70.485	2.7750	34.925	1.3750	25.781	1.0150	32.258	1.2700

Type	L		I	T		S (measured across corners or diameter)		Z		
	±0.254	±0.0100		±0.254	±0.0100	mm	Inch	+0.254 -1.574	+0.0100 -0.0620	
	mm	Inch	mm	Inch	mm	Inch	mm	Inch		
REF 6W10M	34.925	1.3750	19.050	0.7500	10.719	0.4220	12.700	0.5000	4.775	0.1880
REF 8W10M	37.312	1.4690	19.050	0.7500	10.719	0.4220	12.700	0.5000	4.775	0.1880
REF 10W12M	41.275	1.6250	22.225	0.8750	12.319	0.4850	14.732	0.5800	6.350	0.2500
REF 12W12M	46.024	1.8120	25.400	1.0000	13.894	0.5470	16.764	0.6600	6.350	0.2500
REF 14W14M	50.800	2.0000	28.575	1.1250	15.494	0.6100	18.288	0.7200	6.350	0.2500
REF 16W16M	57.150	2.2500	31.750	1.2500	18.669	0.7350	22.352	0.8800	6.350	0.2500
REF 20W20M	63.500	2.5000	34.925	1.3750	21.844	0.8600	25.908	1.0200	9.525	0.3750
REF 24W24M	73.025	2.8750	41.275	1.6250	25.019	0.9850	29.464	1.1600	9.525	0.3750
REF 28W28M	85.725	3.3750	47.625	1.8750	28.194	1.1100	33.020	1.3000	12.700	0.5000
REF 32W40M	104.775	4.1250	53.975	2.1250	42.875	1.6880	51.308	2.0200	14.300	0.5630

## Designation

REF  
Number of Series

L  
Thread  
No Code: Right Hand  
L: Left Hand

8 W 10 M  
Diameter Code

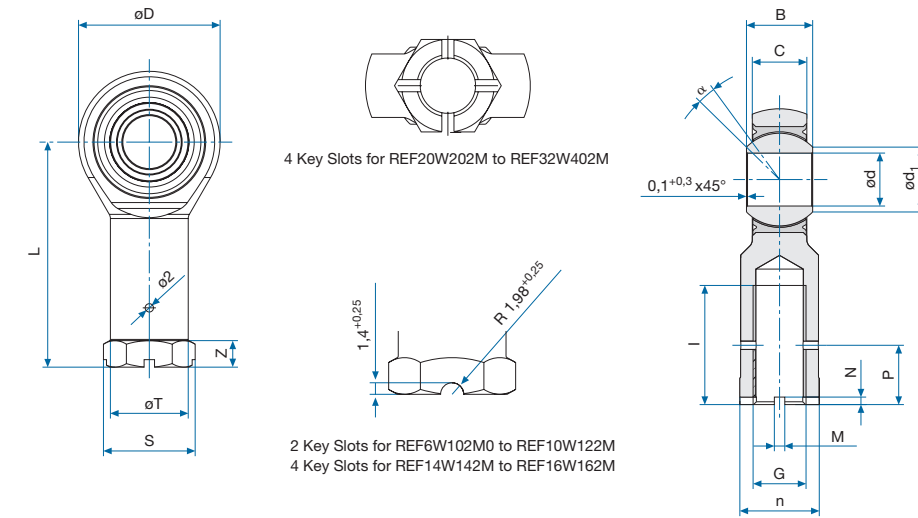
2  
Keyslot  
No Code: Without Keyslot  
2: With Keyslot

X  
Starting Torque  
No Code: Normal  
X: Reduced

Part Number Example  
REF L 8W10 2 M X

\* Inch dimensions are for reference only. | \* Permanently marked in non-functional area.

## Schematic Drawing



## Specifications

Type	n		P		M		N		G	α (min.)
	±0.254	±0.0100	±0.508	±0.0200	+0.127	+0.0050	+0.127	+0.0050	UNJF-3B	(min.)
	mm	Inch	mm	Inch	mm	Inch	mm	Inch		
REF 6W10M	11.100	0.4370	9.525	0.3750	-	-	-	-	.3125-24	15°
REF 8W10M	11.100	0.4370	9.525	0.3750	-	-	-	-	.3125-24	15°
REF 10W12M	12.700	0.5000	11.100	0.4370	-	-	-	-	.3750-24	14°
REF 12W12M	14.275	0.5620	11.100	0.4370	-	-	-	-	.3750-24	8°
REF 14W14M	15.875	0.6250	12.700	0.5000	-	-	-	-	.4375-20	10°
REF 16W16M	19.050	0.7500	14.275	0.5620	-	-	-	-	.5000-20	9°
REF 20W20M	22.225	0.8750	17.450	0.6870	3.175	0.1250	1.956	0.0770	.6250-18	12°
REF 24W24M	25.400	1.0000	20.625	0.8120	3.175	0.1250	1.956	0.0770	.7500-16	13°
REF 28W28M	28.575	1.1250	23.800	0.9370	3.962	0.1560	2.184	0.0860	.8750-14	6°
REF 32W40M	44.450	1.7500	33.325	1.3120	4.750	0.1870	2.946	0.1160	1.2500-12	12°

Type	Starting Torque				Radial Static Ultimate Load		Fatigue Load		Weight (Ref.)	
	Normal		Code X		kN	lbs	kN	lbs	g	lbs
	Nm	In.-lbs	Nm	In.-lbs						
REF 6W10M	0.056 to 0.678	0.5000 to 6.0000	0.028 to 0.056	0.2500 to 0.5000	10.5	2360	6.5	1470	36	0.080
REF 8W10M	0.056 to 0.678	0.5000 to 6.0000	0.028 to 0.056	0.2500 to 0.5000	21.6	4860	10.6	2380	38	0.084
REF 10W12M	0.113 to 1.695	1.0000 to 15.0000	0.028 to 0.056	0.2500 to 0.5000	31.9	7180	13.4	3020	46	0.102
REF 12W12M	0.113 to 1.695	1.0000 to 15.0000	0.028 to 0.056	0.2500 to 0.5000	38.0	8550	15.9	3570	73	0.161
REF 14W14M	0.113 to 1.695	1.0000 to 15.0000	0.056 to 0.113	0.5000 to 1.0000	53.4	12000	21.4	4800	96	0.212
REF 16W16M	0.113 to 1.695	1.0000 to 15.0000	0.056 to 0.113	0.5000 to 1.0000	86.7	19500	36.7	8260	147	0.325
REF 20W20M	0.113 to 1.695	1.0000 to 15.0000	0.056 to 0.113	0.5000 to 1.0000	97.4	21900	40.8	9180	218	0.481
REF 24W24M	0.113 to 1.695	1.0000 to 15.0000	0.056 to 0.113	0.5000 to 1.0000	130.3	29300	51.6	11600	305	0.673
REF 28W28M	0.113 to 2.712	1.0000 to 24.0000	0.113 to 0.226	1.0000 to 2.0000	153.5	34500	58.3	13100	435	0.959
REF 32W40M	0.113 to 2.712	1.0000 to 24.0000	0.113 to 0.226	1.0000 to 2.0000	357.2	80300	135.2	30400	1232	2.717

<b>Bearing Materials:</b>	<b>Rod End</b> MIL-S-5000; Cadmium Plated	<b>Outer Ring</b> EN2539 / 1.4548 / 17-4 PH H1150	<b>Inner Ring</b> EN2030 / 1.3544.9 / AISI 440C	<b>Liner</b> per SAE AS81820 / EN2755	<b>Technical Specification</b> SAE AS81935
---------------------------	---	---	---	---	---

## Contact

USA: KAMATICS CORPORATION 1330 Blue Hills Avenue Bloomfield, CT 06002 USA | Tel: +1 860 243 9704 | E-mail: KSB@kaman.com  
 GERMANY: RWG GERMANY GmbH Medbacher Weg 1 D-91315 Höchstadt a. d. Aisch | Tel: +49 (91 93) 50105 100 | E-mail: RWG-info@kaman.com