

A red K-MAX helicopter is shown in flight, performing a hoist rescue. A person is suspended from the helicopter by a rope, being lowered into a disaster zone. The ground is covered in rubble and debris, with several firefighters in full gear standing nearby. The sky is blue with scattered white clouds.

# K-MAX<sup>®</sup>

## MULTI-MISSION MUSCLE

For global distribution. This document does not contain data subject to the US ITAR, US EAR.

**KAMAN**  
Aerospace

# RAPID HUMANITARIAN MOBILIZATION ON DEMAND

Specifically designed for rapid, repetitive, and precise heavy-lift, K-MAX is the right choice.


With minimal support required, K-MAX deploys immediately carrying up to 6,000 lb (2,722 kg) on each turn. Purpose-built to do the toughest lifting in the harshest environments, K-MAX operators waste no time putting things back into place, restoring critical infrastructure and services.



**POWER RESTORATION**  
Deliver generators and rebuild electrical infrastructure



**HEAVY CONSTRUCTION & DEBRIS REMOVAL**  
Clear roads and create access without the need for heavy equipment



**LOW NOISE  
LOW ROTORWASH  
LESS DISRUPTION**  
Get close to point of need with less impact to support crews & structures

## K-MAX is your cost-effective rapid responder.

- **Low Overhead:** One pilot. One mechanic. Minimal ground support.
- **Fuel Efficient:** Lowest fuel burn per pound delivered.
- **Extreme Reliability:** 98% availability. More than 374,000 hours flown.
- **Dependable:** Lowest maintenance requirements in its class.
- **Built to Last:** Unlimited airframe service life.



### MULTI-DROP

Already the best value in lift-to-fuel ratio, it's an even greater value with multiple payload deliveries per mission



### RESTORE COMMUNICATIONS

Fastest means to restore cell tower communications for emergency operations



### LIFE-SAVING FLEXIBILITY

Execute emergency missions to save those in need



### SMALL FOOTPRINT

Minimal logistics and just a three member crew per shift

**FLEXIBLE. AGILE. DEPENDABLE.**

# RESTORING POWER. BRINGING HOPE.

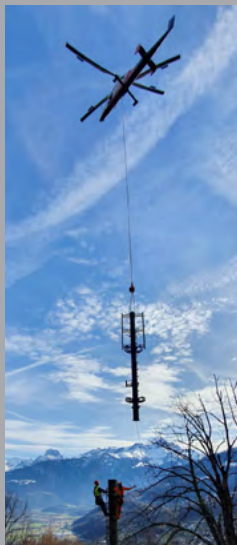
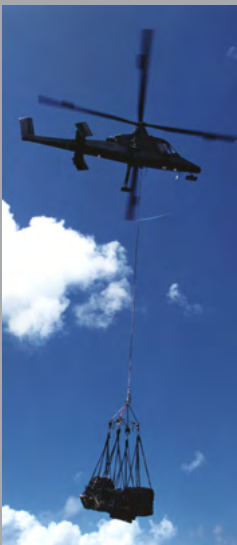
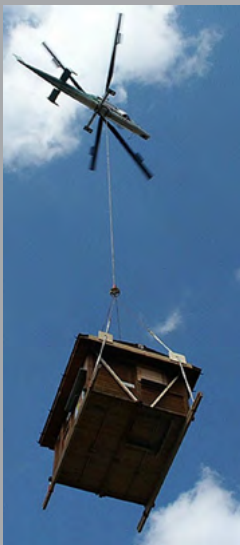


When Hurricane Maria destroyed Puerto Rico's power infrastructure in the island's worst national disaster on record, ROTAK Helicopter Services' K-MAX helicopter came to the rescue. The versatile power horse flew 1,000 tireless hours to help return power to 1.5 million people.

Ideal for complex heavy-lift jobs, K-MAX was instrumental in constructing new high-voltage transmission towers and stringing power lines in austere locations across the island. In addition, the helicopter lifted road clearing equipment

in advance of construction and supported vital aid efforts by flying in critical supplies, fuel, and water to residents cut off from civilization. The helicopter's ability to lift up to 6,000 lb and safely operate in a small footprint with minimal support equipment allowed ROTAK to successfully support FEMA's efforts to rebuild Puerto Rico.

With its exceptionally low overhead, versatility, and high reliability, K-MAX comes to the rescue every time.



## UNMANNED CAPABILITIES

The K-MAX UAS will enable around the clock flight operations in the harshest environments. The aircraft quickly transitions between piloted and remotely operated ensuring the max amount of flexibility to support a range of mission types regardless of an uncertain environment. K-MAX unmanned delivers, period.